

President's Message



Welcome to 2003! We've just ended another successful year, which included one of our best Fairs yet, and are well on our way to bringing you a new year full of fun and entertainment for the entire family.

restock and rejuvenate.

I'm also happy to tell you that after a very long hiatus, the Pacific Amphitheatre will reopen during the summer Fair with nightly concerts throughout the 21-day event. Tickets will be sold for the 8,500-seat theater, while the Grandstand Arena will host our traditional free concert series with two shows nightly.

Leading up to the Fair, we'll host a number of events that are sure to draw a crowd, including the return of America's Family Pet Expo in April followed by the 24th annual Youth Expo in May.

I'm looking forward to the coming year and all of the wonderful events the Orange County Fair & Exposition Center has to offer. I encourage you to join us along with your family and friends for what will be a fun and eventful 2003.

Ruben Smith
President, Board of Directors
Orange County Fair & Exposition Center

Board of Directors

Ruben Smith - President
Patricia Velasquez - Vice President
Jim Barich
Emily Sanford
Randy Smith
Deborah Carona
Leslie "Teddie" A. Ray
Peggy Haidl
Frank P. Barbaro

General Manager

Becky Bailey-Findley

Deputy General Manager

Steve Beazley

Fair Times Staff

Public Affairs Department



NONPROFIT ORG.
U.S. POSTAGE
PAID
SANTA ANA, CA
PERMIT #4137

Return Service Requested

Fair Times

Costa Mesa, California - Winter 2003

ORANGE COUNTY FAIR & EXPOSITION CENTER

ONCE UPON A VINE — A STORYBOOK CELEBRATION AT 24th ANNUAL YOUTH EXPO

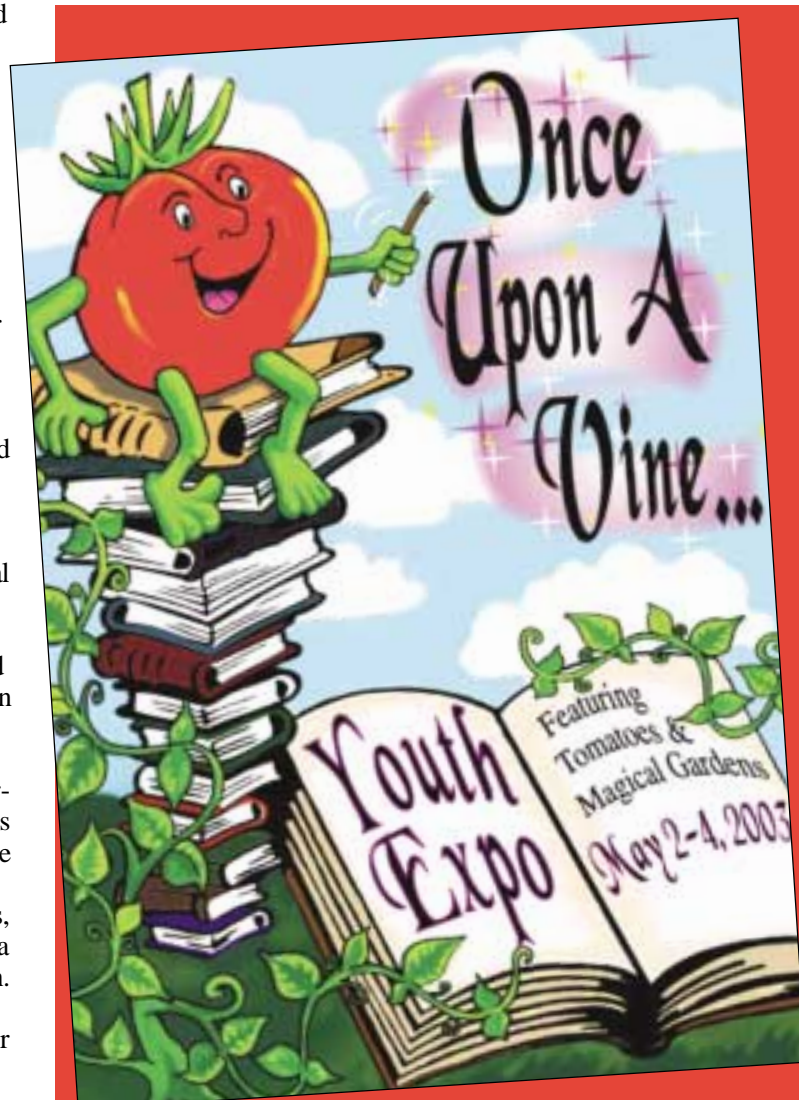
Sentimental favorites and new attractions await visitors to the 24th annual Youth Expo, which will be held May 2-4 at the Orange County Fair & Exposition Center.

Youth Expo, an educational fair celebrating the accomplishments of Orange County youth, brings together pre-schoolers through high school students to showcase their talents. An estimated 17,000 youngsters are expected to exhibit their work.

The theme of this year's Expo, "Once Upon a Vine—Salute to Tomatoes and Magical Gardens," will be reflected in many of the participants' projects and in clip art created by children for the Competition Handbook.

Joan Hamill, OCFEC Manager of Exhibits & Entertainment, said that she believes more programming will increase interest in the 2003 Youth Expo. Among the possibilities, she said, are Grandstand Arena shows geared towards children.

One of the new contests will be the Lil' Sprouts Junior Farm and Garden Contest, modeled after the Farm and Garden contest held during the annual Fair. Children will show off their home grown fruits and vegetables such as lemons, oranges, strawberries, broccoli, cabbage, carrots, cucumbers, and tomatoes.



Another new contest is the Storybook Magical Gardens landscape competition in which a class or youth organization creates a landscape depicting their favorite fairy-tale or classic story. Youth

Expo will supply the fencing and the soil, the entrants supply the rest. A \$100 premium will be paid to the winner, \$75 to second place and \$50 to third place.

continued inside

32nd District Agricultural Association • 88 Fair Drive • Costa Mesa, CA 92626 • (714) 708-FAIR (3247) • www.ocfair.com

Upcoming Events

WEEKLY EVENTS:

ORANGE COUNTY MARKETPLACE - Saturday & Sunday, 7 a.m. - 4 p.m. Main Lot. Admission: adults \$2; children under 12 free. Tel Phil Enterprises (949) 723-6616

FARMERS MARKET - Thursdays, 8:30 a.m. - 1 p.m. Main Lot. Sponsored by the Orange County Farm Bureau (714) 573-0374

CENTENNIAL FARM - Monday - Friday, 1 p.m. - 4 p.m.; Saturday & Sunday, 9 a.m. - 4 p.m. Admission: free. (714) 708-1916

January 2003

4-5 COMPUTER FAIR - Saturday & Sunday, 10 a.m. - 5 p.m. Building #10. Admission: adults \$5; children under 10 free. NP Expos, Inc. (800) 800-5600 www.lacomputerfair.com

17-19 HOME REMODELING & DECORATING SHOW - Friday, noon - 8 p.m.; Saturday, 10 a.m. - 8 p.m.; Sunday 10 a.m. - 6 p.m. Buildings #10 & #12. Admission: adults \$5.75; seniors (55+) \$3; children under 12 free. N.E.C. Group, Inc. (818) 557-2950

18-19 CALIFORNIA WORLD GUITAR SHOW - Saturday, 10 a.m. - 6 p.m.; Sunday, 10 a.m. - 5 p.m. Building #14. Admission: adults \$10; children under 12 free. Tex'us Guitar Shows, Inc. (918) 288-2222 www.texasguitarshows.com

25-26 TRAVEL SHOW - Saturday, noon - 5 p.m.; Sunday, 9:30 a.m. - 2:30 p.m. Building #10 & Main Mall. Admission: adults \$7; Seniors (55+) \$6; children under 12 free. Orange County Register (714) 796-4956

February 2003

1-2 CROSSROADS OF THE WEST GUN SHOW - Saturday, 9 a.m. - 5 p.m.; Sunday, 9 a.m. - 4 p.m. Buildings #10, #12, #14 &

Parade of Products. Admission: adults \$9; seniors \$8; children under 12 free with adult. B&L Productions (801) 544-9125

7-9 SCATS GYMNASTICS - Friday, Saturday & Sunday (Hours TBD). Building #10. Admission: TBD. SCATS Gymnastics (714) 895-2909

15-16 COMPUTER FAIR - Saturday & Sunday, 10 a.m. - 5 p.m. Building #10. Admission: adults \$5; children under 10 free. NP Expos, Inc. (800) 800-5600 www.lacomputerfair.com

22 STEELING THE MIND - Saturday (Hours TBD). Building #14. Admission: TBD (pre-registration req'd). Compass International (208) 762-7777

22-23 SCRAPBOOK EXPO - Saturday & Sunday (Hours TBD). Buildings #10, #12, #17 and Parade of Products. Admission: general \$8; Two-Day Pass \$12 when you pre-register. Workshop Tickets (per class) \$12 - \$20; Saturday Night Crop Party \$20. Scrapbook Expo (909) 734-4307 www.scrapbookexpo.com

2/13-3/2 CIRQUE EOS - CANCELLED - refunds available by calling Admission Network at (888) 880-1002 or at point of purchase.

2/28-3/2 GEM, JEWELRY & BEAD SHOW - Friday, noon - 7 p.m.; Saturday, 10 a.m. - 7 p.m.; Sunday, 10 a.m. - 5 p.m. Building #12. Admission: adults \$5; children under 12 free. Gem Faire, Inc. (760) 747-9215

March 2003

1-2 MALIBU CAT SHOW - Saturday, 11 a.m. - 5 p.m.; Sunday, 9 a.m. - 4 p.m. Building #10. Admission: adults \$5; seniors (55+); children (12 & Under) \$4. Malibu Cat Club (909) 372-9079

8-9 COMPUTER FAIR - Saturday & Sunday, 10 a.m. - 5 p.m. Building #10. Admission:

adults \$5; children under 10 free. NP Expos, Inc. (800) 800-5600 www.lacomputerfair.com

9 BRIDAL SHOW - Sunday, 10 a.m. - 4 p.m. Building #12 & Parade of Products. Admission: general \$7; seniors (62+) \$5; children under 12 free. Adcom Publishing (714) 670-7800

14-16 COSTA MESA ANTIQUE SHOW - Friday & Saturday, 11 a.m. - 8 p.m.; Sunday, 11 a.m. - 5 p.m. Buildings #10, #12 & Parade of Products. Admission: adults \$8; under 17 free with adult. Calendar Antique Shows, Inc. (760) 943-7500

15-16 TEDDY BEAR, DOLL, & ANTIQUE TOY SHOW - Saturday (8 a.m. - 10:30 a.m. early buyers) 10:30 a.m. - 5 p.m.; Sunday 10 a.m. - 3 p.m. Building #14. Admission: adults \$5 (early buyers \$15); children (4 & under) \$3. Linda's Teddy Bear, Doll & Antique Toy Show (760) 434-7444

20 APARTMENT ASSOCIATION TRADE SHOW - TRADE ONLY - Thursday, 9 a.m. - 5 p.m. Building #10. Apartment Association of Orange County (714) 638-5550 www.aaoc.com

21-22 AMISH QUILT SHOW - Friday, noon - 8 p.m.; Saturday, 10 a.m. - 5 p.m. Building #14. Admission: free. Amish Country Traditions (717) 687-9270

22-23 GREAT AMERICAN TRAIN SHOW - Saturday & Sunday, 11 a.m. - 5 p.m. Buildings #10 & #12. Admission: adults \$7; children (11 & under) free. GATS Ltd. (630) 268-1641 www.gats.com

29-30 CROSSROADS OF THE WEST GUN SHOW Saturday, 9 a.m. - 5 p.m.; Sunday, 9 a.m. - 4 p.m. Buildings #10, #12, #14 & Parade of Products. Admission: adults \$9; seniors \$8; children under 12 free with adult. B&L Productions (801) 544-9125

What's Inside



President's Message



The Ranch



111th Orange County Fair



Youth Expo 2003 Clip Art Winners

Master Plan



Presented above is an illustrative site plan, prepared as a result of the OCFEC Master Plan process. It is a refinement of the Preferred Land Use Alternative - Plan B-2 - approved by the Orange County Fair Board of Directors in November 2001.

Orange County Fair & Exposition Center Site Plan

Plenty to Please Early in 2003

Hobbyists, travelers and antique collectors are among those who will find plenty to enthuse about at the Orange County Fair & Exposition Center in 2003.

A wide variety of antiques in a good selection of styles awaits patrons of the Costa Mesa Antique Show March 14-16 in Buildings 10, 12 and the Parade of Products. The antique dealers have assembled their wares from throughout the world. The antique show will be open on Friday and Saturday 11 a.m.-8 p.m. and on Sunday 11 a.m.-5 p.m. Adult admission is \$8; children under 18 are admitted free if accompanied by an adult.

Hobbyists and collectors will find grist for their mills at two shows at OCFEC on the same weekend. The annual Amish Quilt and Craft Show, featuring traditional quilts and handcrafts from Lancaster County, Pennsylvania, will be in Building 14 on March 21 and 22. Besides quilts, the show features handmade toys and other hand-carved wooden goods. Admission is free.

On March 22 and 23, the Great American Train Show chugs into Buildings 10 and 12 to delight hobbyists of all ages. Model trains in all the various track gauges will be on display, and there will be operating layouts of modern and classic rolling stock. Vendors

will be on hand offering supplies and collectibles. Adult admission is \$7, and children 11 and under are free.

Travelers will find new lures at the annual Orange County Register Travel Show Jan. 25-26 in Buildings 10 and 12 and the Parade of Products. There will be displays by travel suppliers, airlines, cruise operators and exotic destinations all around the globe.

SCATS, the Southern California Acro Team, will hold a competition by its young gymnasts Feb. 7-9. SCATS, a member of the U.S. Association of Gymnastics, has been training gymnasts for over 37 years.

Youth Expo Clip Art Winners

Talented students from Anaheim, Santa Ana, and Orange won the annual Youth Expo 2003 Clip Art contest. The art illustrates the 2003 theme of "Once Upon A Vine - Salute to Tomatoes and Magical Gardens."

Lindsey Brehm, a third grader at Covenant Christian School in Orange, took first place in the elementary school division.

Seventh grader Matthew Haretakis of Fairmont Private School in Santa Ana took first place in the junior high school division.

The first place winner in the high school division was Jin Yang, an eleventh grader at Fairmont Preparatory Academy in Anaheim.

Winning students received a \$25 cash award and a ribbon for their winning entries, which debuted in the Youth Expo 2003 Competition Handbook, available by calling (714) 708-1553 or online at www.ocfair.com



Lindsey Brehm age 8, Grade 3



Jin Yang age 18, Grade 11



Matthew Haretakis age 12, Grade 7

Big Fun at a Bigger Orange County Fair

The biggest, happiest and hippest fair in Orange County history will welcome visitors from July 11 through Aug. 3, 2003, to celebrate tomatoes—the most popular vegetable on American tables.

The Fair's Board of Directors voted at its September meeting to make the 111th Orange County Fair a 21-day event, adding four days to the previous 17-day format. The Fair will close on Mondays to freshen facilities.

In recommending the additional dates, General Manager Becky Bailey-Findley explained to the Board the Fair's success in recent years had increased attendance, necessitating spreading the number of visitors over more days to alleviate potential crowding. Fair hours will be the same as in 2002: Friday-Sunday 10 a.m.-midnight, and Tuesday-Thursday noon-midnight.

To expand programming during the 21-day celebration, the 8,500-seat Pacific Amphitheatre will reopen as an additional concert stage hosting the Fair's most ambitious talent line-up ever. Currently, there are no plans to operate the amphitheatre year round. The venue will host one show a night and all shows will require an additional paid admission. The 10,000-seat lawn



The Fair Board voted to salute tomatoes in 2003 after considering these facts:

section will remain closed.

The Fair's ever-popular free headline concert series will move to the Grandstand Arena, offering two shows per night. Grandstand entertainment will be rounded out by the annual Demolition Derby, bull riding, and motorcycle races.

The Arlington Theater will host free cultural festivals on the weekends. Additionally, there will be continuous entertainment on three stages throughout the Fair.

- The United States is the largest producer of tomatoes in the world.
- California is the leading grower of tomatoes for processing.
- California is the second largest grower of fresh tomatoes.
- Orange County is one of California's top tomato growing areas.
- Tomatoes are the most popular home grown vegetable in America.
- Americans consume 12 million tons of tomatoes annually.
- California's 2000 tomato crop was worth \$950 million.

Amphitheatre to Reopen For 2003 Fair

The 8,500-seat Pacific Amphitheatre will be reopened for the 2003 Orange County Fair concert series. Currently undergoing up to \$500,000 in repairs and refurbishing to bring the stage and the seats back to serviceable condition, the amphitheatre, which has been closed since 1995, will become the site of the Fair's top-flight entertainment offerings. Currently, there are no plans to open the amphitheatre except during Fairtime.

As centerpiece of an expanded entertainment program, the reopened amphitheatre will be host on all 21 nights of the Fair concerts by the top acts in popular music, Deputy General Manager Steve Beazley said. All seats in the venue will be reserved, he said, requiring an additional paid admission. He said that reserved seat prices would

be scaled so that the Fair breaks even. The entertainment lineup for the amphitheatre will be announced in early spring, along with prices and dates for buying reserved seat tickets.

During its grand reopening, the amphitheatre will host one show a night. For more than ten years, the amphitheatre was a favorite concert venue in Southern California. After opening in 1983, the amphitheatre attracted such all-star acts as Bette Midler; Barry Manilow; Bob Dylan; Crosby, Stills & Nash; Eric Clapton; Al Jarreau; Madonna; Aerosmith; Guns N' Roses; Kiss; Liza Minnelli; Michael Bolton; Frank Sinatra; and Gloria Estefan.

The amphitheatre closed in 1995 due to litigation between the Fair and the amphitheatre's previous owner, the Nederlander Organization.

Fair Folks



Dan Gaines, 43, has been appointed Orange County Fair box office manager. Dan will oversee ticket sales for the annual Orange County Fair, Pacific

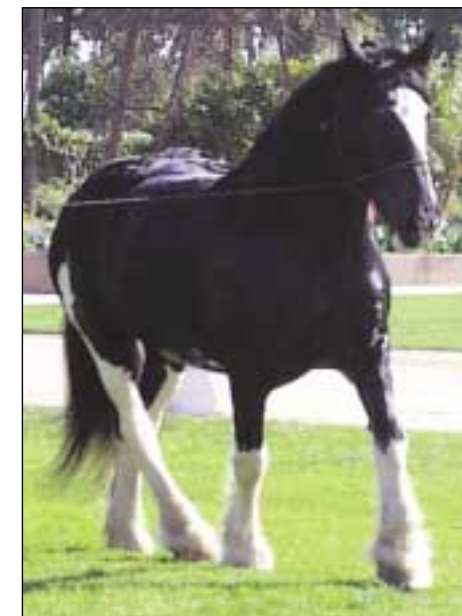
Amphitheatre concerts series, and select events and shows throughout the year.

A resident of Irvine, Dan previously has been box office manager at the Irvine Barclay Theater, the Sun Theater, the Coors Amphitheater in Chula Vista, and the Irvine Meadows Amphitheatre. He also was assistant box office manager at the Greek Theater in Los Angeles.

The Ranch Reaches Out to At-Risk Kids

Extending its community service role, the Orange County Fair & Exposition Center will launch The Ranch pilot program on Jan. 1 consisting of a Horse Education unit, Livestock unit, and Gardening unit. The program is designed to ultimately provide educational and recreational opportunities for the public.

On Sept. 26, 2002, the Orange County Fair & Exposition Center Board of Directors voted unanimously to give the go-ahead to the after-school "Ranch" program that was outlined by Jim Bailey, Director of Special Projects.



Approximately 25 "at-risk" Davis School fifth graders will be involved from 3 to 6 p.m. in the program for six months, Bailey said, learning about horses, livestock and vegetable gardening. The community service program, to be located at the Equestrian Center, would be an adjunct to the Fair's Centennial Farm that attracts over 60,000 school children annually in organized tours.

Ultimately, a year-round schedule will be developed that could include two-week summer camp sessions, Bailey said. In the Horse Education unit, youngsters will learn the horse's history, safety and grooming, breeds and colors, feeding, tack and equipment, horsemanship, equine health matters, and the modern use of the horse.

Orange Villa Buckaroos 4-H Club will develop the unit and provide instruction using their horses and equipment.

Pigs, sheep, calves, chickens and goats would be on site at all times as part of the Livestock unit. Animals that are housed at the fairgrounds by members and leaders of two 4-H clubs will be used for instruction. When 4-H animals are not available, Centennial Farm will provide them.

Students in the Livestock unit will learn the types of farm animals, uses of animals, and how to keep them healthy. Also, they will have use of a chicken house for hens as well as an incubator to hatch chicks.



Participants in the Gardening unit will each get an 8-foot-square plot to prepare and plant. Students can plant the vegetables they choose, then learn how to fertilize, water, weed and harvest their crops. Raised beds will be created with railroad ties.

For more information regarding the Ranch program, call (714) 708-1878.

2003 - 24th Annual Youth Expo, continued

Running concurrently with Youth Expo will be the annual Talent Search, Jazz Festival, and the 48th annual Orange County Science and Engineering Fair. Winners in the Talent Search are invited to participate in the annual Orange County Fair.

Junior high and high school bands will compete in the 13th annual Jazz Festival Friday and Saturday, May 2 and 3.

Hundreds of technical-minded youths take part every year in the Science and Engineering Fair. Each year the creator of the winning project is awarded a scholarship to attend the International Summer Science Institute, an annual pre-college workshop held at the Weizmann Institute of Science in Rehovot, Israel.

In addition, the Orange County Department of Education will return with some challenging contests that it brings to each year's Youth Expo. One is the Elementary Science Olympiad, in which teams of 4th, 5th and 6th graders vie in activities that encourage learning in biology, earth science, chemistry, physics, problem-solving and technology. Students of different academic and cultural backgrounds learn to cooperate and share skills for a team success.

Future Inventors of Orange County, jointly sponsored by the Orange County Department of Education and Invent America, allows pupils between 3rd and 8th grade to develop creative solutions to unique situations.

Always a popular attraction, the Pampered Pet Contest will determine

which animal has the softest fur, sweetest face, longest ears, looks most like its master, performs the silliest trick, and is best dressed.

School projects are the heart of Youth Expo as the students compete in age and grade categories that include architectural drawings, ceramics, collections, crafts, creative writing, fine arts, group projects, photography, poetry, science, computer technology and social studies.

The school projects will be in Building 10, 4-H projects in Building 17, Girl Scouts projects in Building 12, and the Science & Engineering Fair in Building 14.

Competition handbooks for Youth Expo are available online at www.ocfair.com or by calling (714) 708-1553.